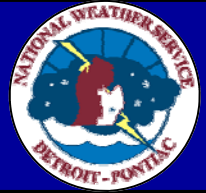




National Weather Service

Detroit/Pontiac, MI



Web Pages

NWS Detroit/Pontiac HazMat
Weather Support Page
www.weather.gov/dtx/hazmat

NWS Detroit Home Page
www.weather.gov/detroit

NOAA Weather Radio
www.nws.noaa.gov/nwr

NWS National Home Page
www.weather.gov

NOAA Home Page
www.noaa.gov

Great Lakes Environmental
Research Laboratory (GLERL)
www.glerl.noaa.gov

NWS Emergency 24/7 Contacts

- 248-625-3309 x286
- 248-625-4139
- 248-625-4249
- 800-808-0006
- 800 Mhz Radio (EMD 2)
- E-Team NWS Detroit/Pontiac notification mail list

National Weather Service Detroit/ Pontiac, MI

9200 White Lake Rd.
White Lake, Michigan 48386
<http://www.weather.gov/dtx>

Phone: 248-625-3309
Fax: 248-625-4834
Email: w-dtx.webmaster@noaa.gov

Weather Support for Non-Weather Emergencies

NOAA's National Weather Service (NWS) provides weather support for Non-Weather Emergencies 24 hours a day, 7 days a week, 365 days a year. The Detroit/Pontiac NWS office serves 17 counties in Southeast Michigan including the U.S. waters of Lakes Huron and St. Clair, and the Michigan waters of Lake Erie.



Brandy Baker / The Detroit News

Weather Support for Non-Weather Emergencies Detroit/Pontiac National Weather Service

- Weather Observations and Forecasts
- Model Input (Cameo/Aloha)
- Model Output (HYSPLIT)
- River Observations and Forecasts
- On-site Support
- Additional Data Collection such as special weather balloon releases
- Great Lakes Observations and Forecasts
- Information Dissemination via NWR
- Direct link to NOAA HazMat

NWS Detroit/Pontiac HazMat Support Web Page www.weather.gov/dtx/hazmat/

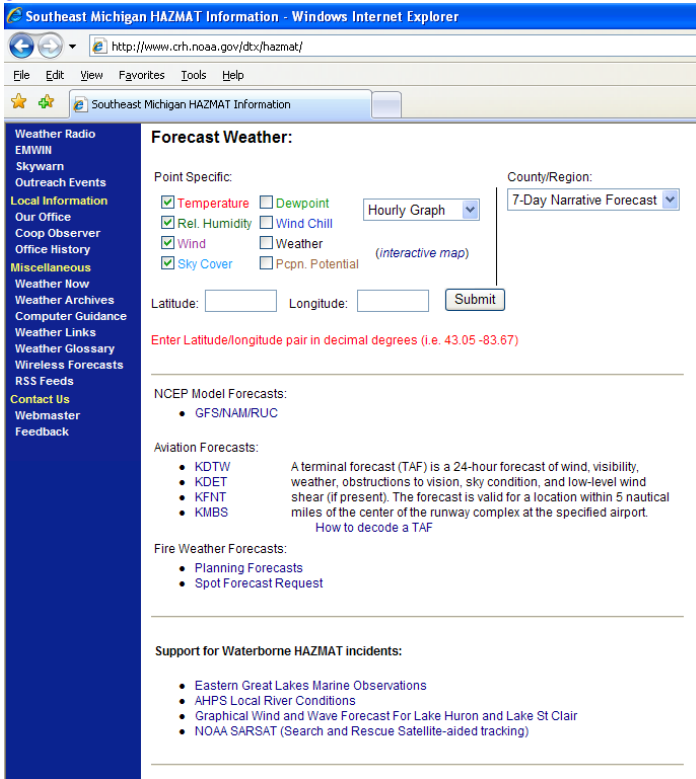
NWS Detroit/Pontiac provides a non-weather emergency weather support web page for emergency managers and incident command. This web page is "hidden", meaning that this is no link from the NWS Detroit/Pontiac main web page, www.weather.gov/dtx. Only emergency management officials have been given the address to this non-weather emergency weather support web page. The information on this web page is provided as a quick reference to meteorological and hydrological data critical to your non-weather emergency.

(Continued on page 2)

The screenshot shows a web browser window displaying the NOAA National Weather Service website for Detroit/Pontiac, MI. The page title is "Southeast Michigan HAZMAT Information". The main content area includes a navigation menu with "Home", "Site Map", "News", and "Organization". Below the menu, there is a section titled "Southeast Michigan HAZMAT Information" which provides a description of the support services and a list of services including:

- provision and interpretation of current and forecast conditions,
- trajectory/dispersion modeling (HYSPLIT),
- additional data collection such as special weather balloon launches, and
- on-site support for additional meteorological interpretation and data collection.

 The page also includes a "Current Weather" section with a "Surface observations" table and a "Regional Weather" section with a "Region Surface Plot" and "Region Surface Analysis" options. The page is accessed via a Windows Internet Explorer browser window.

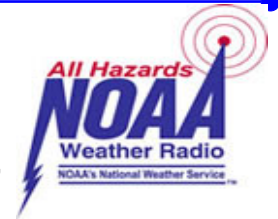


(Continued from page 1)

Specifically you will find the following data on the hazmat support web page:

- NWS Detroit/Pontiac contact information
- Current observations across Southeast Michigan and the Great Lakes
- Weather observations for the past three days at any one location
- Radar data including precipitation estimates
- Winds aloft
- Point specific forecast database
- Spot forecast request
- Waterborne hazmat support
- NOAA Hazmat Response and Restoration link
- HYSPLIT trajectory and dispersion model descrip-

NOAA Weather Radio All Hazards (NWR) is a nationwide network of radio stations broadcasting National Weather Service (NWS) warnings, watches, forecasts and other hazard information 24 hours a day.



Working with the Federal Communication Commission's (FCC) Emergency Alert System, NWR is an "all hazards" radio network, making it your single source for comprehensive weather and emergency information.



NWR broadcasts warning and post-event information for all types of hazards—both natural (such as tornadoes and winter storms) and environmental (such as chemical releases or oil spills). NWR requires

a special radio receiver or scanner capable of picking up the signal.

The NWS Detroit/Pontiac office works with DHS, MSP EMHSD, Local Emergency Managers, and local and state EAS plans to ensure non-weather emergency information is disseminated through NWR. All local and state EAS plans should be followed however, NWR offers wide dissemination with an alarm feature

- | | |
|--------------------------------|-----|
| Civil Danger Warning | CDW |
| Civil Emergency Message | CEM |
| Earthquake Warning | EQW |
| Evacuation Immediate | EVI |
| Fire Warning | FRW |
| Hazardous Materials Warning | HMW |
| Law Enforcement Warning | LEW |
| Local Area Emergency | LAE |
| 911 Telephone Outage Emergency | TOE |
| Nuclear Power Plant Warning | NUW |
| Radiological Hazard Warning | RHW |
| Shelter in Place Warning | SPW |

NWS Detroit/Pontiac Communications

- Phone (land line)
 - 248-625-3309 x286
 - 248-625-4139
 - 248-625-4249
 - 800-808-0006
- E-Team
 - NWS Detroit/Pontiac notification list
- Fax
- 800 Mhz Radio
 - NWS Detroit/Pontiac home channel is EMD Channel 2
 - Have access to many other channels
 - EMD Channels 1, 2, and 3
 - All Event Channels
 - EAS Group Channels for DTX, GRR, and APX
- Primitive network connections between NWS and MSP Operations

